

Receiver with Push-Lock™ Stud Installation Instructions

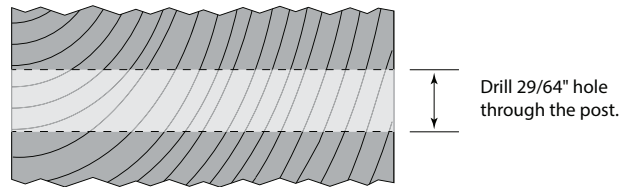


Make sure the holes are drilled properly in the posts where you will be installing your fittings.

If you are installing the fittings in a metal railing, see *Metal Railings/Hardware Mounting Holes/Boring Guide* for boring instructions.

If you are using wood end posts, see “Wood Railings-Mounting Alternatives” section in this guide (pages 16 and 17) for hole sizes.

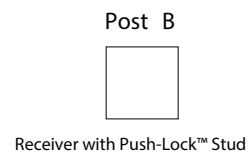
For wood posts, drill a 29/64” hole through the post. (It’s best to drill about half-way from one side, then drill from the other side to complete the hole. You may want to drill a pilot hole with a smaller bit first.)



Section A. Instructions in this section apply if you are using a Receiver with Push-Lock™ Stud on one end of your cable run and any device OTHER THAN a Pull-Lock™ Fitting on the other end. If you are using a Pull-Lock™ fitting on the other end, see Section B, page 35.

Step A. Install other fitting on the first end post (Post A below).

1. Install the fitting you will be using in the end post opposite the end in which you will be installing the Receiver with Push-Lock™ Studs first (Post A).

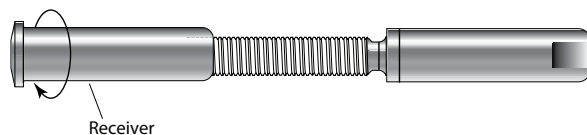


If you will be using another Receiver with Push-Lock™ Stud, see step 1A below.

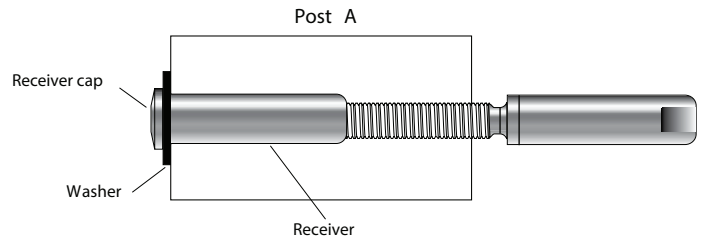
For all other fittings, follow the instructions for installing that device found in this *Installation Guide*, and then proceed to Step B on the following page.

- 1A. If you are installing another Receiver with Push-Lock™ Stud on the other end of your cable run (Post A), install that tensioner in Post A, as follows, before you proceed with step B on next page.

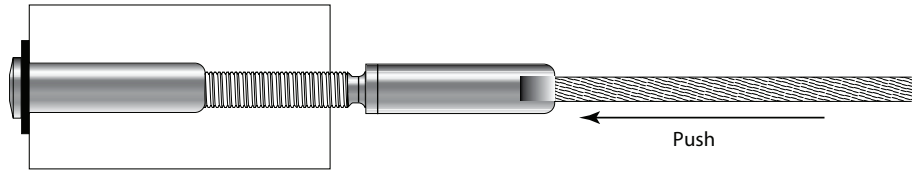
- 1) Turn the Receiver onto the threads of the Push-Lock™ Stud at least 6 turns.



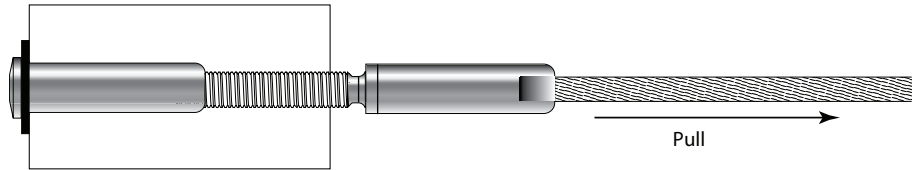
2) Slip the washer over the body of the Receiver (11HW14 washer for wood posts, black Delrin® washer for metal posts), then slide the Receiver with Push-Lock™ Stud into the hole in your post with the Receiver cap end at the back side of the post.



3) Push the cable into the hole in the fitting as far as it will go (approximately 1-1/16"). Twist the cable in the right-hand direction (with the lay of the cable) as you push it into the fitting. You will feel it slide through the jaws inside the stud.

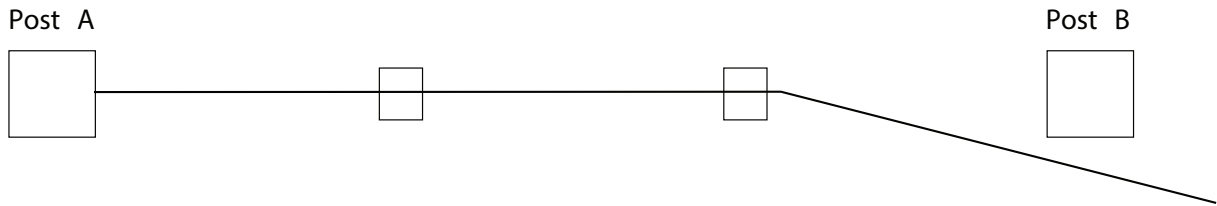


4) Pull the cable to set the gripping action of the Push-Lock™ Stud.

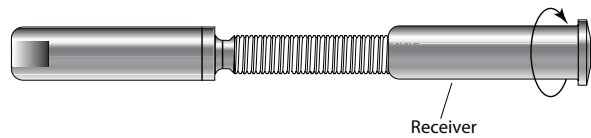


Step B. Install the Receiver with Push-Lock™ Stud on Post B.

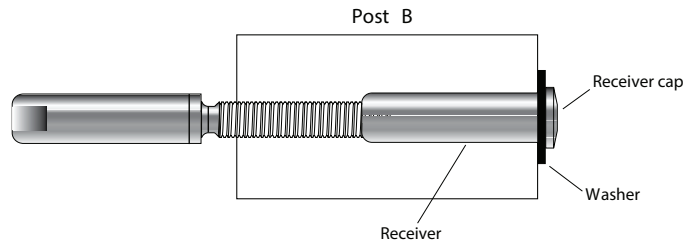
1. Run the cable through the intermediate posts (if any) to Post B.



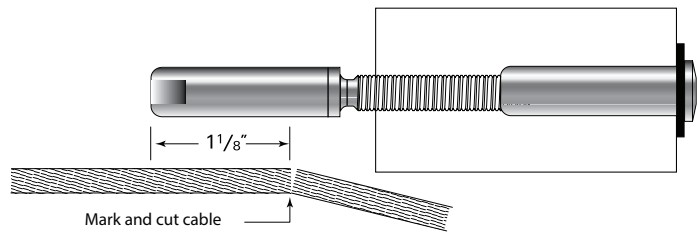
2. Turn the Receiver onto the threads of the Push-Lock™ Stud approximately 6 turns.



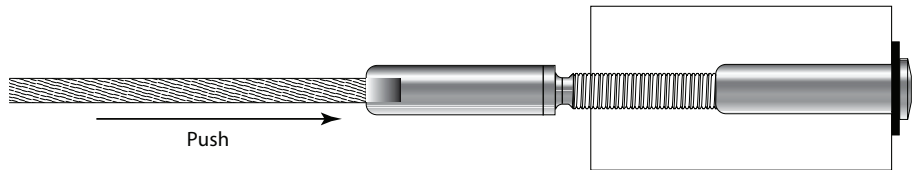
3. Slip the Washer over the body of the Receiver (11HW14 washer for wood posts, black Delrin® washer for metal posts), then slide the Receiver with Push-Lock™ Stud into the hole in Post B with the Receiver cap resting against the back side of the post.



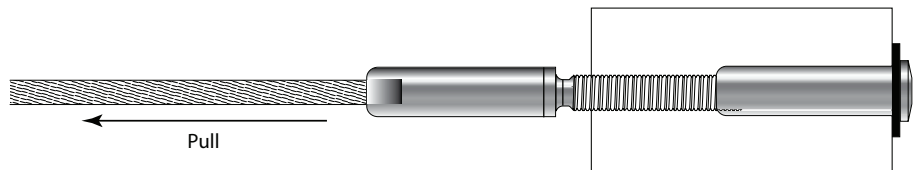
4. Pull the cable tight and mark the cable at a point 1-1/8" from the leading edge of the Push-Lock™ Stud. Cut the cable at the mark, using a cable cutter.



5. Push the cable into the hole in the stud as far as it will go (approximately 1-1/16"). Twist the cable in the right-hand direction (with the lay of the cable) as you push it into the fitting. You will feel it slide through the jaws inside the stud.



6. Pull the cable to set the gripping action of the Push-Lock™ Stud.



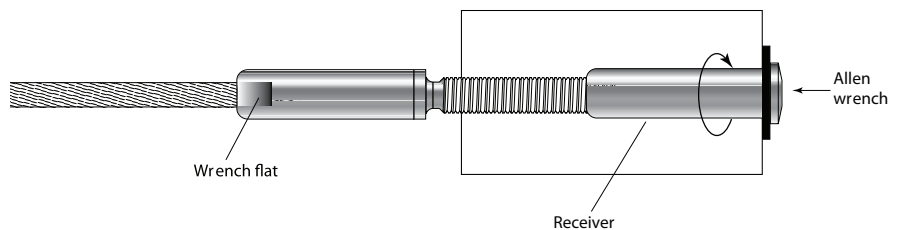
Step C. Tension the cable after all of the fittings have been installed on both end posts.

1. If there is a tensioning device on Post A, tension both ends. Follow the instructions for tensioning the device on Post A found in this guide and the instructions in No. 2 below for tensioning the Receiver with Push-Lock™ Studs in Post B.

Note: If you are using an Invisiware® Receiver on the other end post A, tension the Receiver by turning it onto the threads of the Swaging Stud at least far enough that none of the threads on the stud are exposed when the cables are tight.

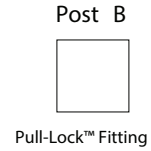
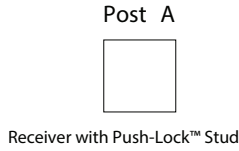
Note: If you are using Receivers with Push-Lock™ Studs on both ends (Post A and Post B), then follow No. 2 below for tensioning both ends.

2. Tension the cable. Grip the wrench flat on the end of the Push-Lock™ Stud with a 3/8" open-end wrench (to keep the cable from turning), then turn the Receiver with a 3/16" Allen wrench until the cables are tight.

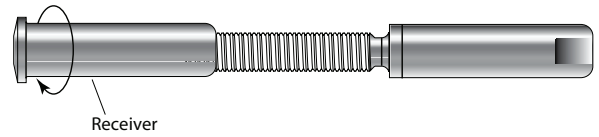


Section B. Instructions in this section apply if you are using a Receiver with Push-Lock™ Stud on one end of your cable run and a Pull-Lock™ fitting on the other end. For all other combinations, see Section A, pages 32 to 34.

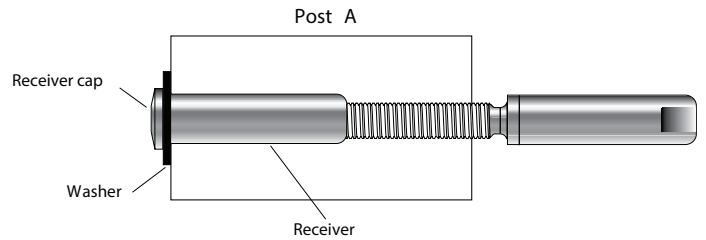
Step A. Install the Receiver with Push-Lock™ Stud in the first end post (Post A below).



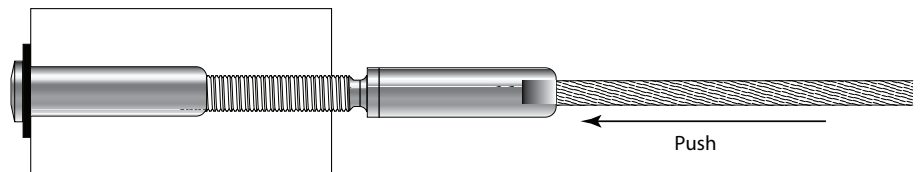
1. Turn the Receiver onto the threads of the Push-Lock™ Stud approximately 6 turns.



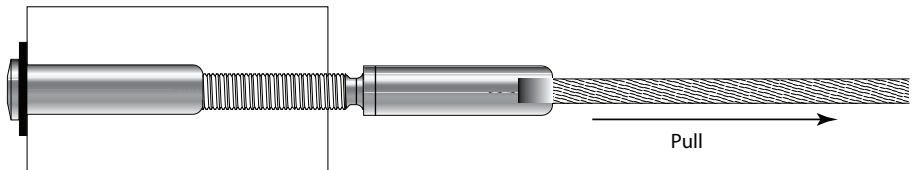
2. Slip the Washer over the body of the Receiver (11HW14 washer for wood posts, black Delrin® washer for metal posts), then slide the Receiver with Push-Lock™ Stud into the hole in Post A, with the Receiver cap resting against the back side of the post.



3. Push the cable into the hole in the stud as far as it will go (approximately 1-1/16"). Twist the cable in the right-hand direction (with the lay of the cable) as you push it into the fitting. You will feel it slide through the jaws inside the stud.



4. Pull the cable to set the gripping action of the Push-Lock™ Stud.

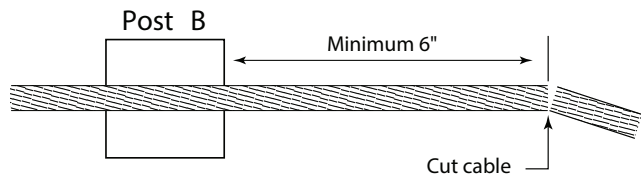


Step B. Install the Pull-Lock™ fitting on Post B.

1. Run the cable through your intermediate posts (if any) and through Post B where you will be installing the Pull-Lock™ Fitting.



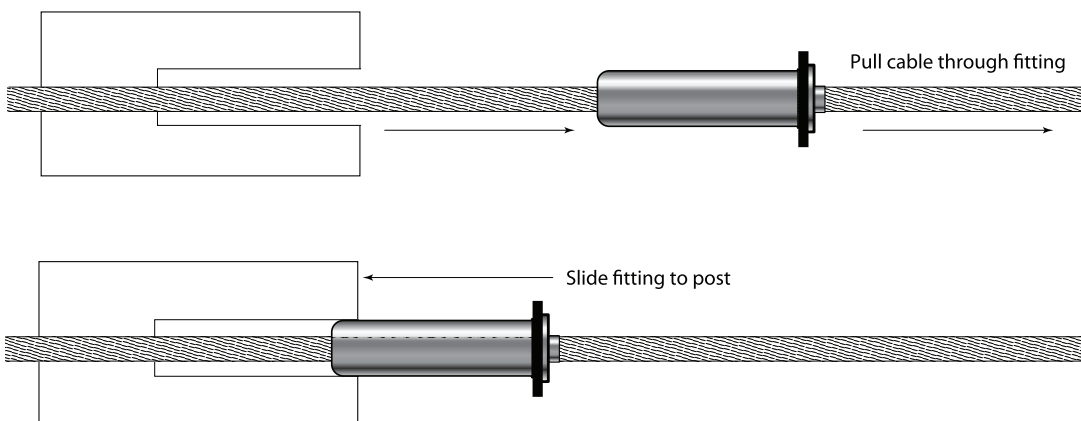
2. Cut the cable with a cable cutter, leaving enough cable extending out from the back side of the post to be able to grasp the cable firmly with your hand (6" or more).



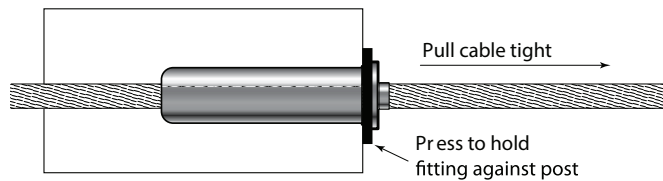
3. Slip the washer over the body of the Pull-Lock™ Fitting (11HW14 washer for wood posts, black Delrin® washer for metal posts).



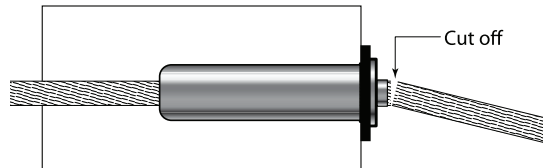
4. Push the cable into the hole in the front of the Pull-Lock™ Fitting and pull the cable through the fitting. Twist the cable in the right-hand direction (with the lay of the cable) as you push it into the fitting. Then slide the fitting along the cable and up to the back side of the post.



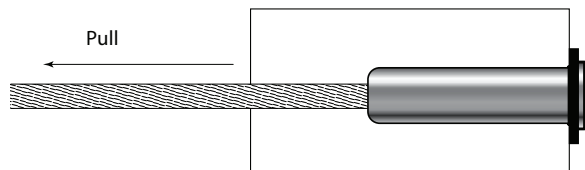
5. Hold the cable with one hand and slide the Pull-Lock™ Fitting into the hole in the post. Press on the back of the Pull-Lock™ Fitting to hold it securely in the post and pull the cable through the fitting until it is as tight as you can make it.



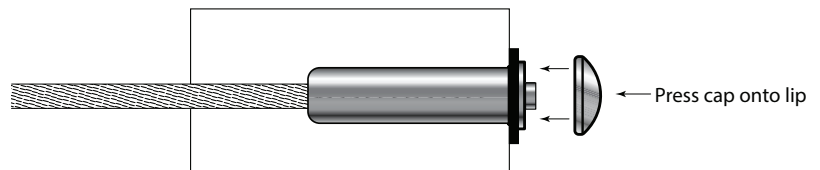
6. Cut the cable flush with the hole in the back of the Pull-Lock™ Fitting, using a cut-off wheel (11TCUTKIT) or hacksaw.



7. Pull the cable to set the gripping action of the Pull-Lock™ Fitting.



8. Press the cap onto the lip of the Pull-Lock™ Fitting.



Step C. Tension the cable after all of the fittings have been installed on both end posts.

Grip the wrench flat on the end of the Push-Lock™ Stud at Post A with a 3/8" open-end wrench (to keep the cable from turning), then turn the receiver with a 3/16" Allen wrench until the cables are tight.

