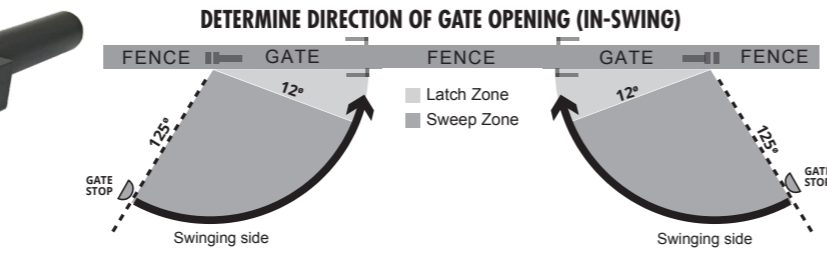
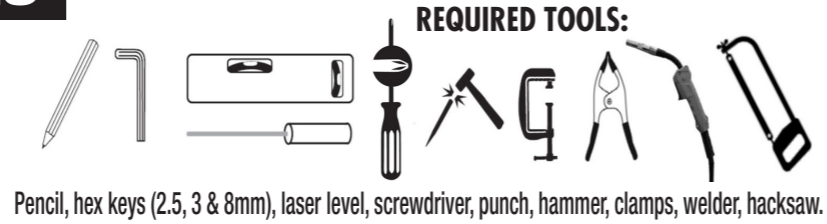
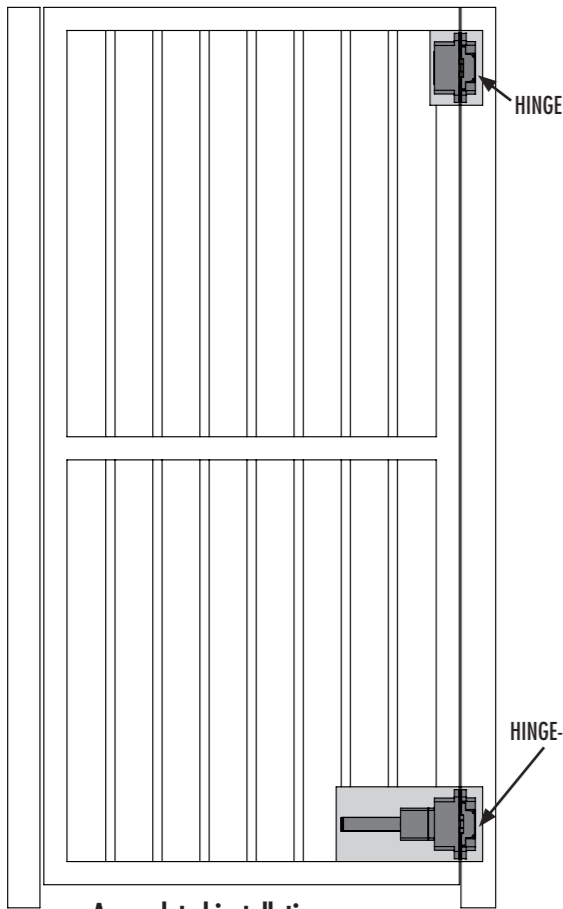


Hinge-Closer Instructions: GATES

Product Code	Models	Contains
77108523	SC CF DOOR CLOSER SET	HINGE & HINGE-CLOSER
78108513	SC CF DOOR PLAIN HINGE	HINGE
77108552	STEEL Weld-Box Kit	4 BOXES
77108551	ALUMINUM Weld-Box Kit	4 BOXES

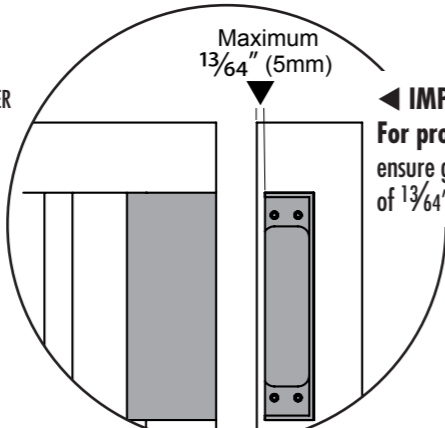
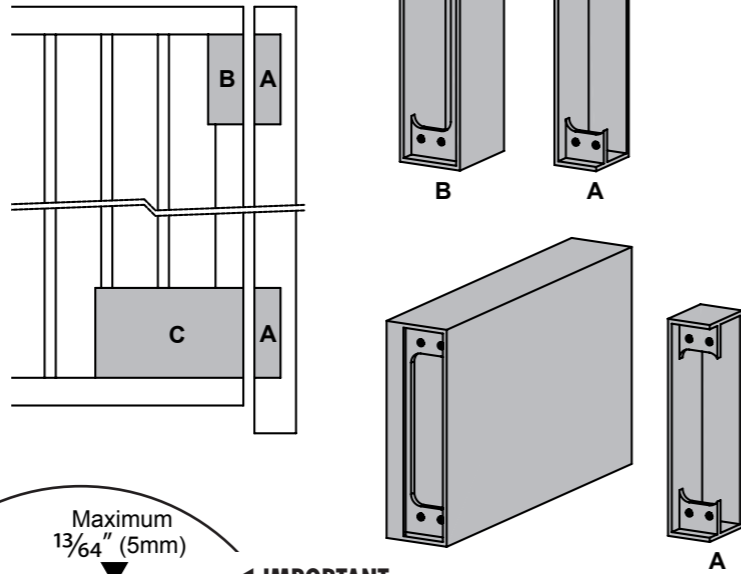


*** CAUTION:** A GATE-STOP is required to prevent a gate opening beyond 125° (see above diagram). Forcing a gate beyond a 125° opening may damage closer and void Warranty.



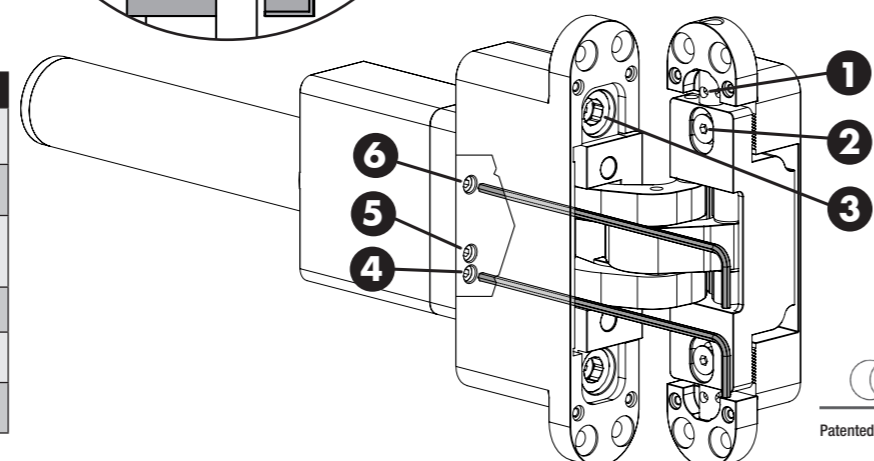
1 WELD WELD-BOXES ONTO GATE AND POST

Weld weld-boxes onto gate and post to suit your profiles/sections.

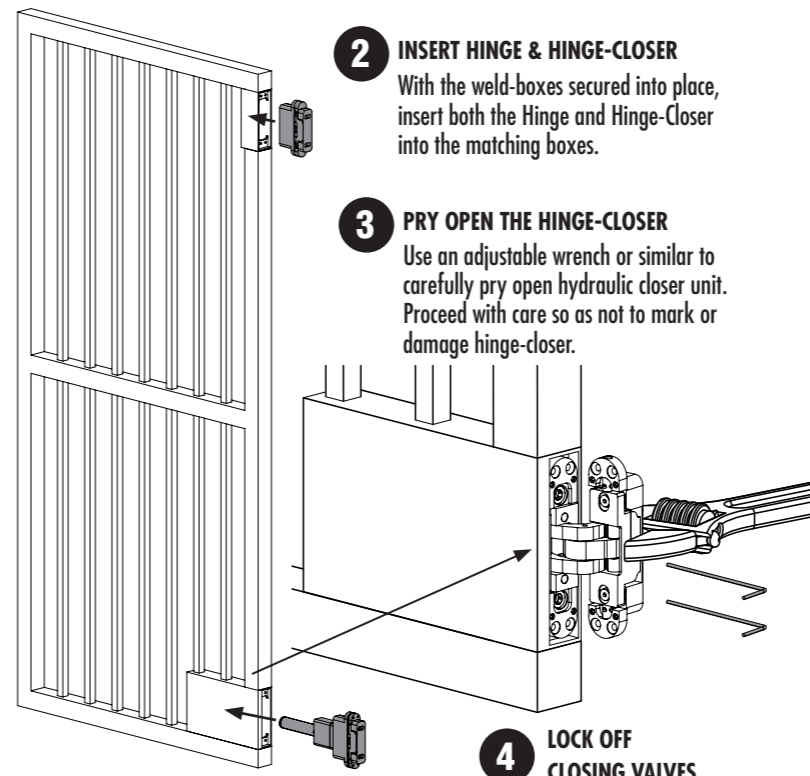


IMPORTANT: For proper operation, ensure gap is a maximum of 13/64" (5mm).

FIGURE 1



SUREClose CONCEALFit



2 INSERT HINGE & HINGE-CLOSER

With the weld-boxes secured into place, insert both the Hinge and Hinge-Closer into the matching boxes.

3 PRY OPEN THE HINGE-CLOSER

Use an adjustable wrench or similar to carefully pry open hydraulic closer unit. Proceed with care so as not to mark or damage hinge-closer.

4 LOCK OFF CLOSING VALVES

Use the 2.5mm hex key to close off valves '4' and '6' (see Figure 1 at lower left) to keep closer unit open for installing fixing screws. (Note: Open valves again after completing step '6'.)

5 SCREW HINGE-CLOSER TO WELD-BOX

With the closer unit open, insert the four fasteners supplied to secure the hinge-closer to weld-box (gate). Secure the upper hinge in the same way.

6 INSERT HINGE UNITS INTO FENCE POST

With the hinge units fully mounted to the gate, insert the entire apparatus into the fence post side and secure with the fasteners supplied. **IMPORTANT:** Now open valves '4' and '6' (see Fig. 1) as damage may occur with valves locked off.

10 ADJUST GATE GAP

Use the 8mm hex key to tighten/loosen the screws '3' (see Figure 1) to adjust the gate gap between gate and post, or to adjust the gate inclination. Adjust in small increments, on top and bottom hinges.

11 ADJUST FOR BACK-CHECK

To reduce opening angle use 2.5mm hex key to turn valve '5' clockwise (Figure 1). To increase opening angle turn this valve counterclockwise.

7 ADJUST FOR CLOSING AND LATCHING SPEED

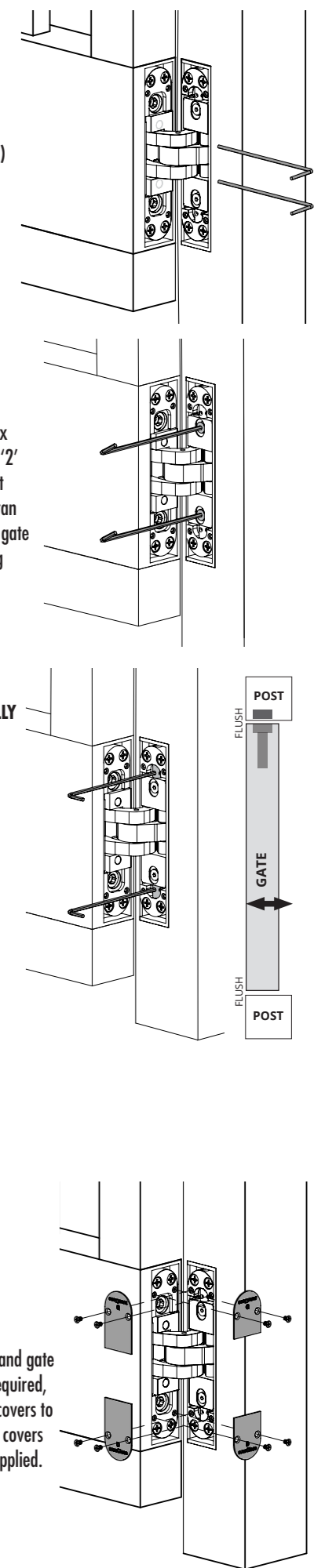
Adjust valve '4' (see Figure 1) for final snap-close speed. Adjust valve '6' for gate closing speed. To reduce speed, turn clockwise. To increase speed, turn counterclockwise.

8 TO ADJUST (GATE) HEIGHT

If required, take the 3mm hex key and loosen fixing screws '2' (Figure 1) by 1.5 turns. Insert same 3mm key into the capstan screw '1' (Figure 1) to adjust gate vertically. Finish by tightening screws '2'.

9 ADJUST GATE HORIZONTALLY TO ALIGN WITH POST

If required, take the 3mm hex key and loosen fixing screws '2' by 1.5 turns. Push gate so as to align post flush with gate frame. Finish by tightening screws '2'.



Adjustment Instructions

REF.	ADJUSTMENT	UNIT	RANGE
1	Vertical gate height	Both	+/- 3/64" (2mm) with 3/64" (1.25mm) steps
2	Horizontal gate movement	Both	+/- 3/64" (1.25mm)
3	Depth and Inclination	Both	Gap between post and gate is adjustable from 3/64" (2mm) - 1/4" (6mm)
4	Final snap-close speed	Closer	Between 12°-0°
5	Gate back-check	Closer	Steps at 60°, 80°, 100° & 125°
6	Gate closing speed	Closer	125° to 0°